



Butte Regional CONSERVATION PLAN

BALANCING GROWTH AND CONSERVATION

BRCP FACT SHEET

BACKGROUND

The Butte Regional Conservation Plan (BRCP) is a joint federal Habitat Conservation Plan and state Natural Community Conservation Plan (HCP/NCCP). The BRCP is being prepared by the Butte County Association of Governments (BCAG) on behalf of ten Plan Participants:

- City of Biggs
- City of Chico
- City of Gridley
- City of Oroville
- County of Butte
- Caltrans District 3
- Western Canal Water District
- Richvale Irrigation District
- Biggs West-Gridley Water District
- Butte Water District

GOAL

The Goal of the BRCP is to replace the current project-by-project environmental and wetland permitting programs (administered by state and federal regulatory agencies), with an alternative permitting program that is smarter, faster, results in better resource conservation, and is administered by BCAG and the participating cities and county.

BENEFITS

- Provides certainty of environmental and wetland permitting costs and requirements
- Provides consistency of environmental mitigation requirements for the next 50 years.
- Results in time and cost savings for Cities and County and project proponents
- Provides economic competitive advantage for Cities & County
- Provides local control by consolidating and streamlining environmental permitting under one locally controlled plan
- Provides improved habitat conservation for species
- Acquisition of conservation lands will be through willing sellers only

PLANNING AREA

The BRCP Planning Area totals over 550,000 acres and includes the western half of Butte County including four incorporated cities (see map on page 3).

PERMIT STREAMLINING

The BRCP effort is seeking to provide streamlined permitting for the following permitting programs:

- U.S. Endangered Species Act (Section 10, Section 7)
- California Endangered Species Act (Section 2835)
- U.S. Clean Water Act Section 404 (via Programmatic General Permit/Simplified Permit Program)
- U.S. Clean Water Act Section 401 (via Programmatic Water Quality Certification on Programmatic General Permit)
- California Department of Fish and Game Section 1600 Streambed Alteration

COVERED ACTIVITIES

The activities that will be covered by the permit streamlining provided by the BRCP generally include:

- All land disturbing activities identified in city and county General Plans including residential, commercial, industrial and public facility construction, transportation projects (roadway improvement projects, bike and pedestrian projects, transit improvements, etc.), recreational facility projects and improvements (parks, playgrounds, pedestrian bridges, golf courses, etc.), etc.
- BCAG and Caltrans District 3 planned roadway improvement projects including Hwy 70 and 99 widening.
- Water and Irrigation district projects and canal maintenance activities.

COVERED SPECIES

The BRCP permits will include coverage for 40 species:

Tricolored Blackbird	Central Valley Steelhead	Ferris' Milkvetch
Yellow-Breasted Chat	Central Valley Spring-Run	Lesser Saltscale
Bank Swallow	Chinook Salmon	Hoover's Spurge
Western Burrowing Owl	Central Valley Fall-Run	Ahart's Dwarf Rush
Western Yellow-Billed Cuckoo	Chinook Salmon	Red Bluff Dwarf Rush
Greater Sandhill Crane	Sacramento Splittail	Butte County Meadowfoam
California Black Rail	Green Sturgeon	Veiny Monardella
American Peregrine Falcon	River Lamprey	Hairy Orcutt Grass
Swainson's Hawk	Valley Elderberry Longhorn Beetle	Slender Orcutt Grass
White-Tailed Kite	Vernal Pool Tadpole Shrimp	Ahart's Paronychia
Bald Eagle	Conservancy Fairy Shrimp	California Beaked-Rush
Giant Garter Snake	Vernal Pool Fairy Shrimp	Butte County Checkerbloom
Blainville's Horned Lizard	Western Spadefoot Toad	Butte County Golden Clover
	Foothill Yellow-Legged Frog	Green's Tuctoria
		Western Pond Turtle

SCHEDULE

- Formal Public Draft BRCP document released for review: late 2014
- Adoption and permitting of BRCP: mid 2015

FOR MORE INFORMATION, SEE THE PROJECT WEBSITE AT:

WWW.BUTTEHCP.COM

CONTACT INFORMATION:

Chris Devine
Planning Manager
Butte County Association of Governments
2580 Sierra Sunrise Terrace, Suite 100
Chico, CA 95928
Ph 530-879-2468
Email cdevine@bcag.org

Jon Clark
Executive Director
Butte County Association of Governments
2580 Sierra Sunrise Terrace, Suite 100
Chico, CA 95928
Ph 530-879-2468
Email jclark@bcag.org

BRCP Plan Area Boundary Map

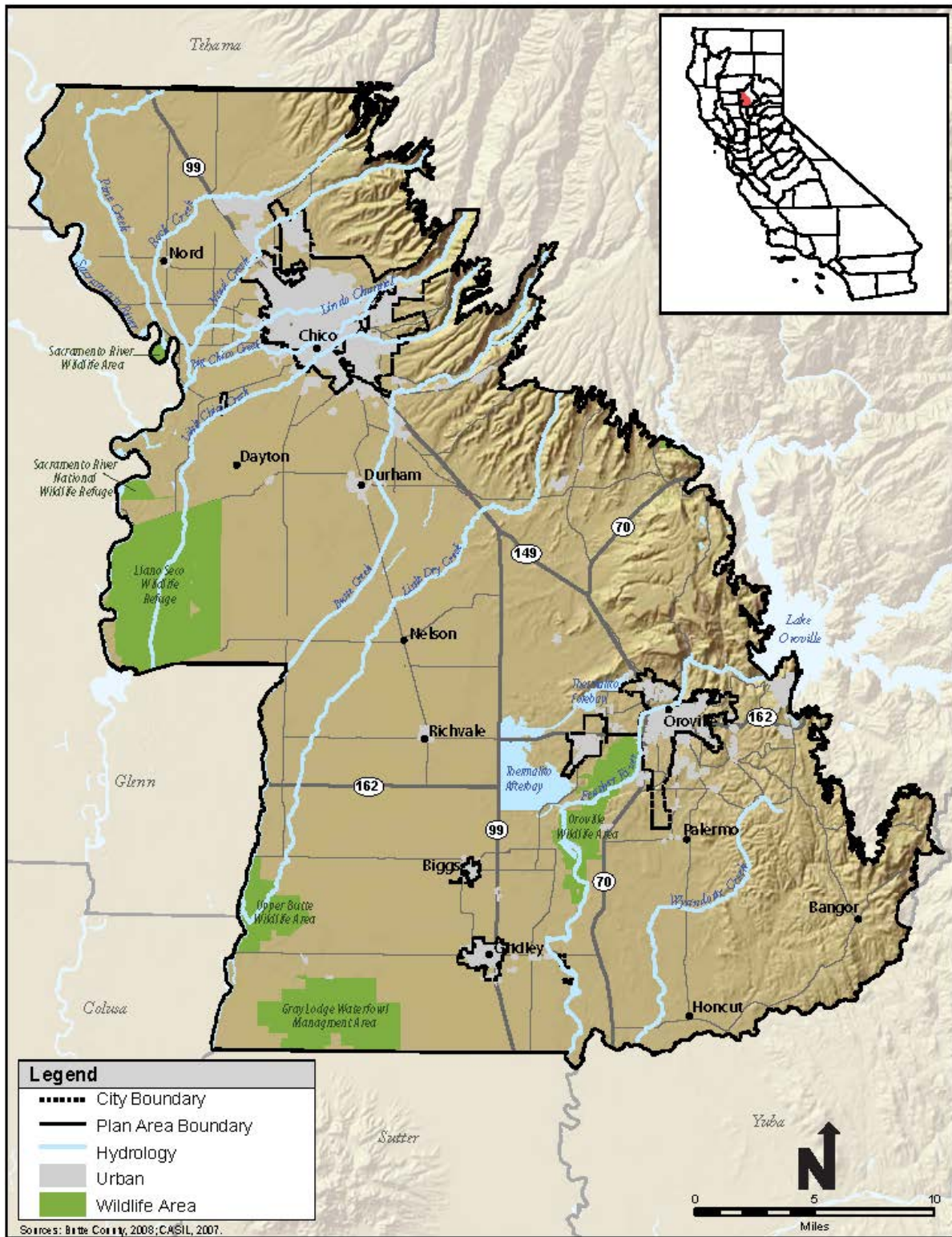


Figure 1-1. Plan Area for the Butte Regional Conservation Plan