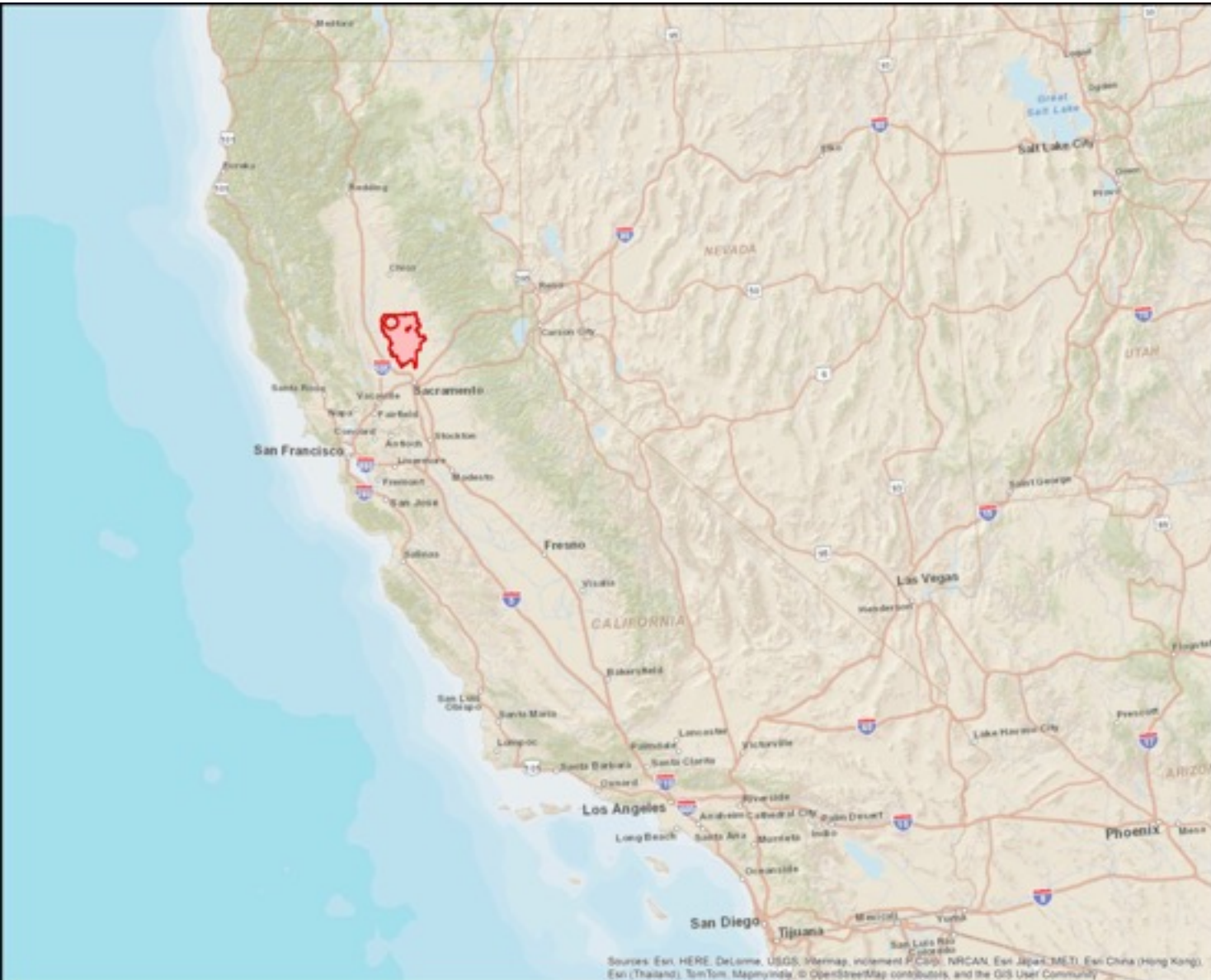




# YUBA SUTTER

Regional Conservation Plan

Danelle Stylos



### Legend

 Regional Conservation Plan Boundary



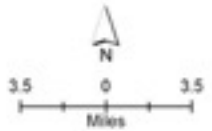
Sources: Esri, HERE, DeLorme, USGS, Imagery, Swiremap, IGN, IGC, NRCAN, Esri Japan, METI, Esri China (Hong Kong), Esri (Thailand), TomTom, Mapbox, © OpenStreetMap contributors, and the GIS User Community

Source: Yuba County, 2013; Sutter County, 2014; ICE, 2012; PMC, 2014; SACOG, 2014; CDFW, 2013



**Legend**

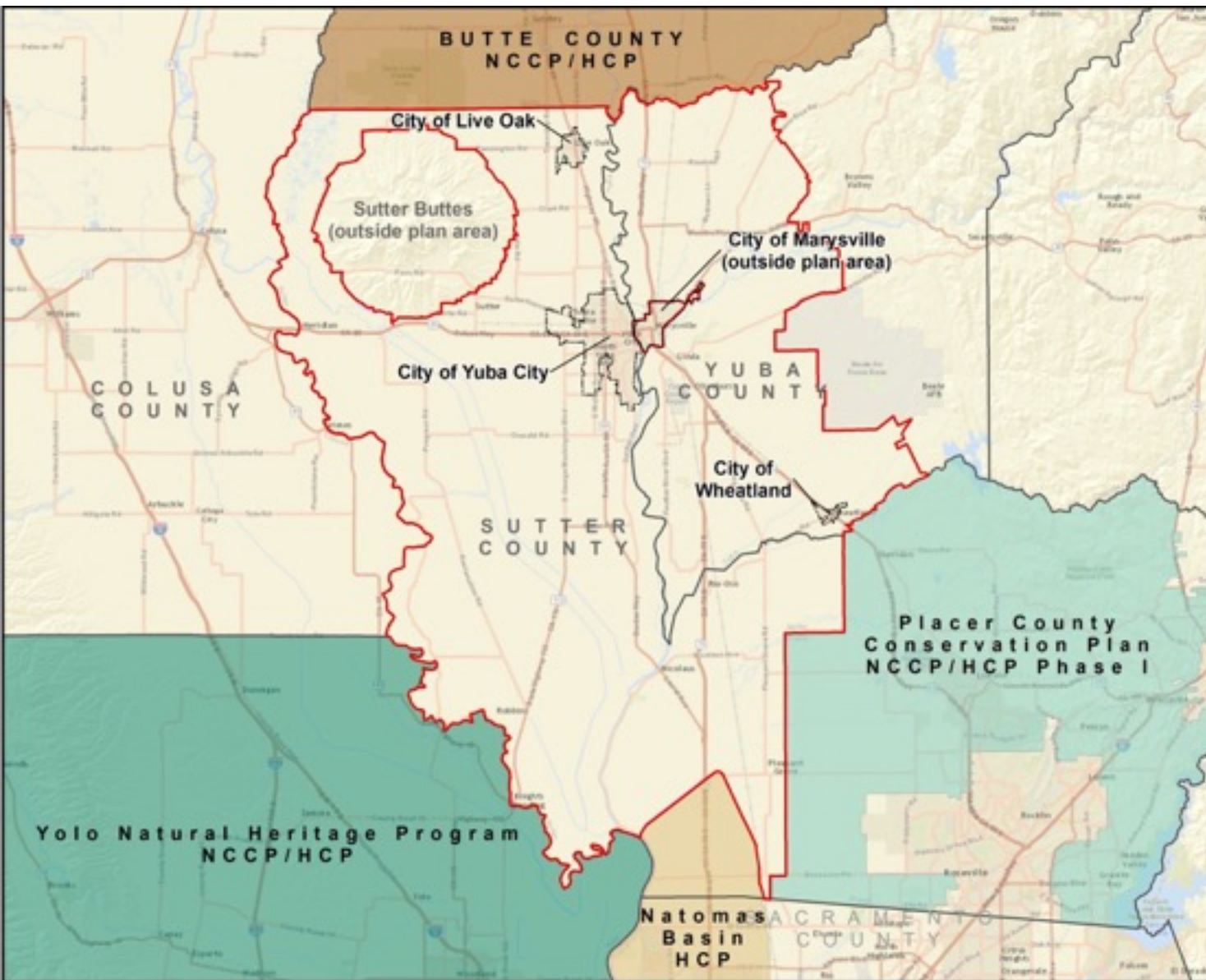
-  City Limits
-  Regional Conservation Plan Boundary
-  County Boundary










Sources: Esri, HERE, DeLorme, USGS, Intermap, iDB, Swire, NRCAN, Esri Japan, METI, Esri China (Hong Kong), Swire (Thailand), TomTom, Mapbox, and OpenStreetMap contributors, and the GIS user community

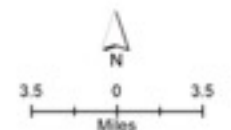
Source: Yuba County, 2013; Sutter County, 2014; ICE, 2012; PMC, 2014; SACOG, 2014; CDFW, 2013





### Legend

-  City Limits
-  Regional Conservation Plan Boundary
-  County Boundary
-  Butte County NCCP/HCP
-  Natomas Basin HCP
-  Placer County Conservation Plan NCCP/ HCP Phase I
-  Yolo Natural Heritage Program NCCP/HCP

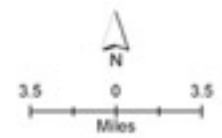


Source: Yuba County, 2013; Sutter County, 2014; CDFW, 2012; PAC, 2014; SACOG, 2014; CDFW, 2013



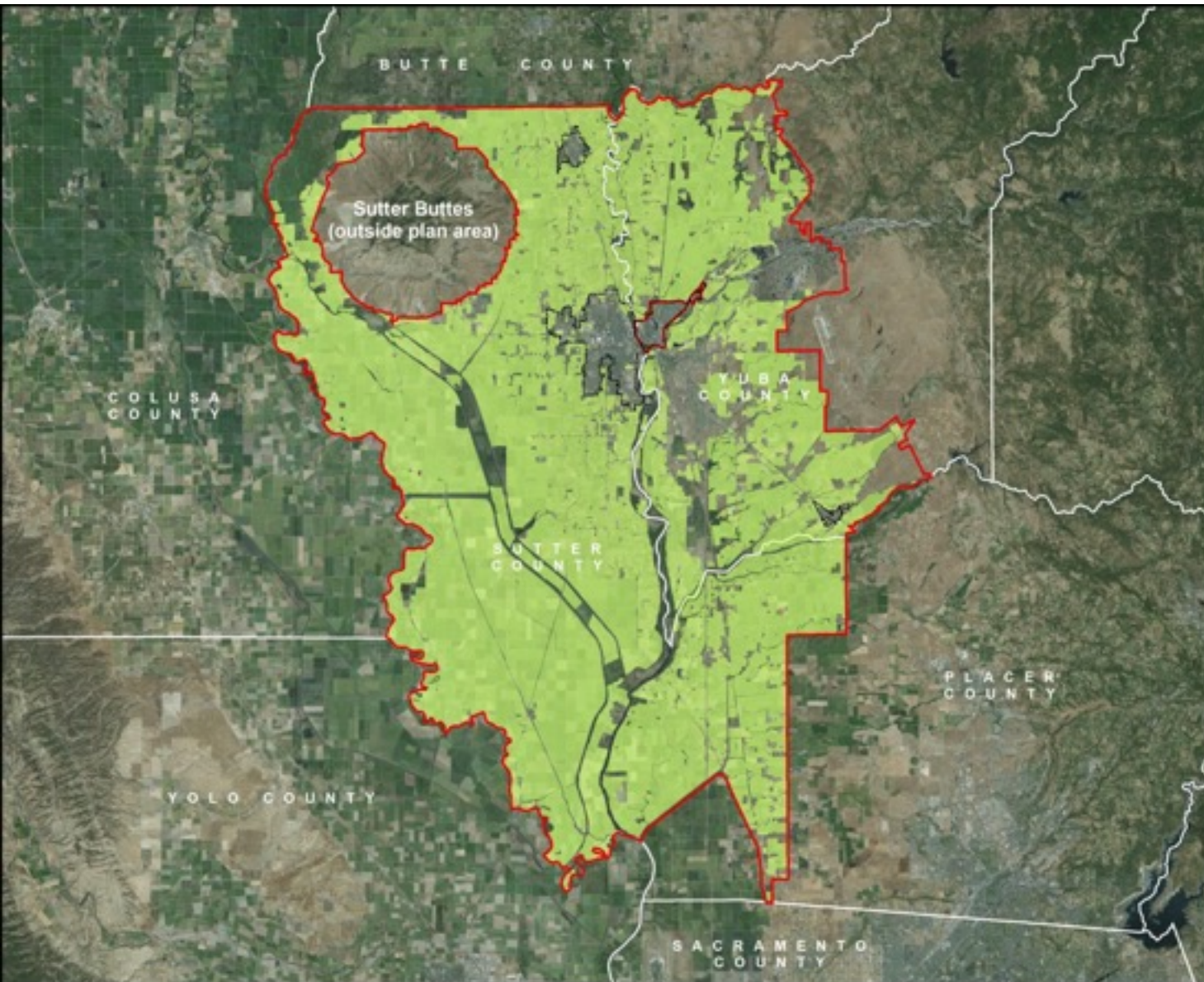
**Legend**

-  City Limits
-  Regional Conservation Plan Boundary



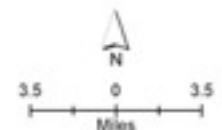
Source: Yuba County, 2013; Sutter County, 2014; SCE, 2012; RMC, 2014; SACCO, 2014; CREW, 2013





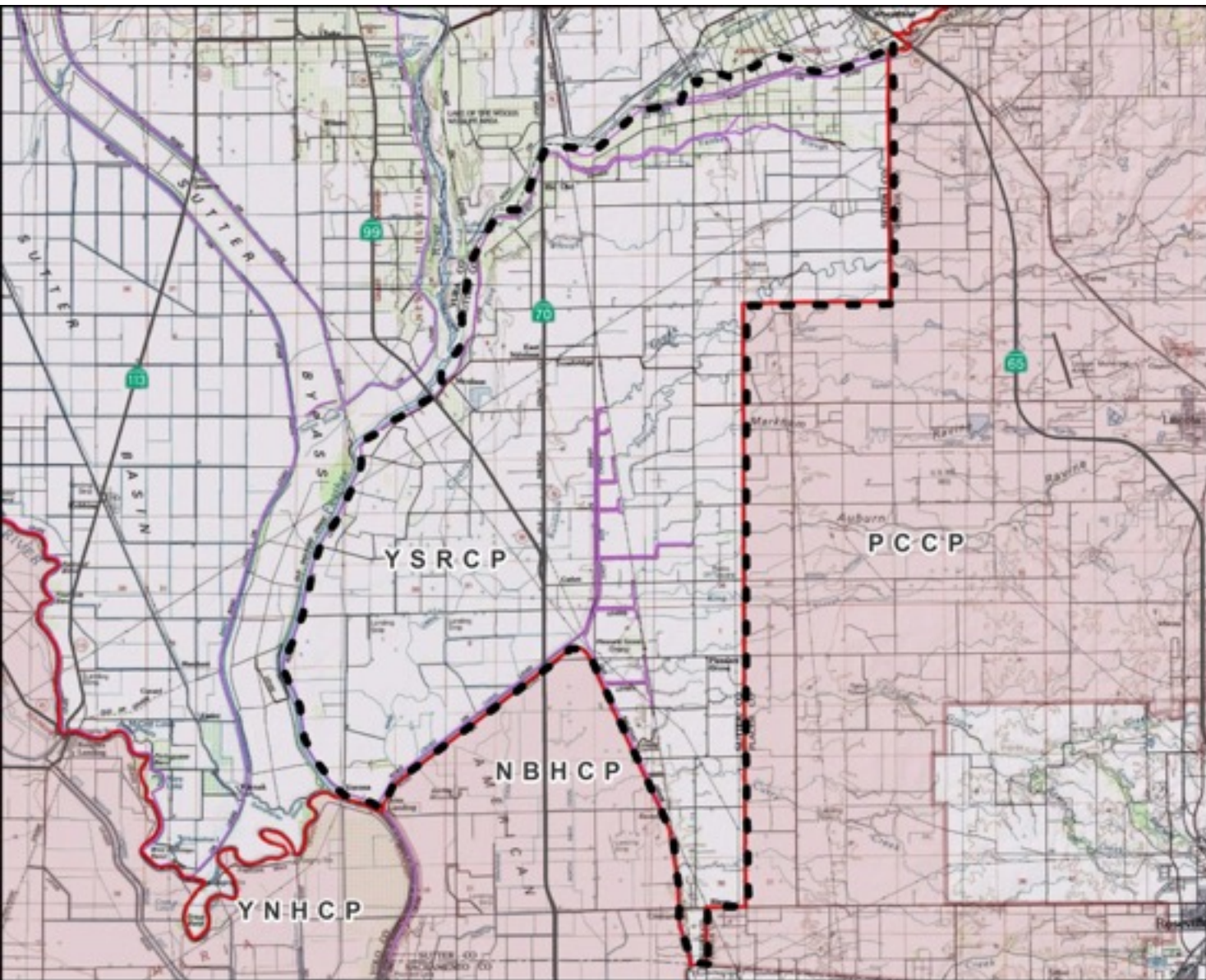
### Legend





-  City Limits
-  Regional Conservation Plan Boundary
-  Agricultural Land Uses

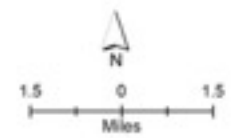


Source: Yuba County, 2013; Sutter County, 2014; ICF, 2012; RMC, 2014; SACOG, 2014; CREW, 2013





- Legend**
-  Area B
  -  Regional Conservation Plan Boundary
  -  Other HCP/NCCP Boundary
  -  Levees



Source: Yuba County, 2013; Sutter County, 2014; SCE, 2012; PWC, 2014; SACCO, 2014; CREW, 2013